

LEARN SHEET: Treble Clef Pitch & Pentatonic Scales (7.5 & 7.6)

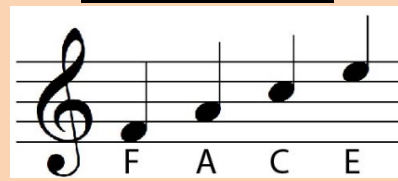
Vocabulary you need to know:

Tempo	The speed of the music
Compose	To create a piece of music
Perform	To play/sing music for an audience
Rehearse	To practice a piece of music

Notation terms

Treble Clef	Musical symbol used to indicate the pitch of notes
Stave	The 5 lines that music is written on
Bar line	A vertical line that divides music up into bars
Pitch	A sound usually described as high or low
Time signature	Two numbers used to tell you how many beats are in each bar
Key signature	The sharps or flats which tell you what key the music is in
Double bar line	Double vertical lines which divide music into sections
Repeat sign	A sign that indicates a section of music which is to be played again
Interval	The difference between two pitches
Pentatonic Scale	A scale which uses 5 notes consisting of degrees of the scale 1,2,3,5 & 6

Treble Clef Pitch

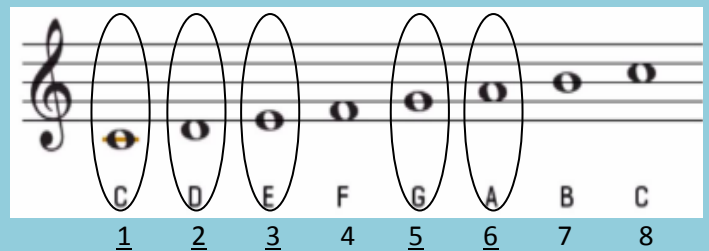


FACE

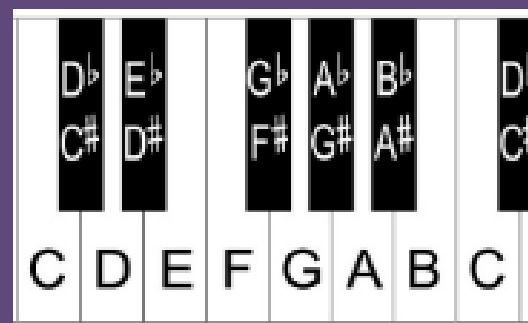


Even Great Big Dragons Fly

The Pentatonic Scale – In C major



Notes on the keyboard



Intervals – The difference between two pitches

