



## How councils use Census Data

- Planning school Places
- Planning recreation facilities
- Planning Transport
- Planning for energy and resource use
- Emergency planning
- Supporting the elderly through services



- The Bradford District 2011 Census population estimate is 522,500. This is a population increase of 51,700 since 2001, an increase of 11.0%.
- Bradford District remains the fourth largest metropolitan district in England after Birmingham, Leeds and Sheffield.
- Bradford is the youngest metropolitan district in the country - with 22% of our population 0 -14 years of age.
- In the Bradford District 13.3% of the population is 65 years of age or over, compared to 16.4% for England and Wales.
- The Bradford District 2011 Census occupied household estimate is 199,300. This is an increase of 19,054 households since the Census in 2001.

	Advantages	Disadvantages
Brownfield Site	<ul style="list-style-type: none"> <li>Reduces the loss of countryside that might otherwise have been taken for building</li> <li>Helps revive old disused urban areas</li> <li>Services such as water, electricity, sewers already in place</li> <li>Located new main areas of employment so commuting time reduced</li> </ul>	<ul style="list-style-type: none"> <li>Often more expensive because old buildings have to be cleared and the land made free of pollution</li> <li>Often surrounded by rundown areas so does not appeal to more wealthy people</li> <li>Higher levels of pollution</li> <li>May not have good access in terms of modern roads.</li> </ul>
Greenfield Site	<ul style="list-style-type: none"> <li>Relatively cheap and rates of house building are faster</li> <li>The layout is not restricted by other buildings around it</li> <li>Healthier environment</li> </ul>	<ul style="list-style-type: none"> <li>Valuable farm land lost</li> <li>Attractive scenery lost</li> <li>Wildlife and habitats lost or disturbed</li> <li>Development causes noise and light pollution</li> <li>Encourages suburban sprawl</li> </ul>



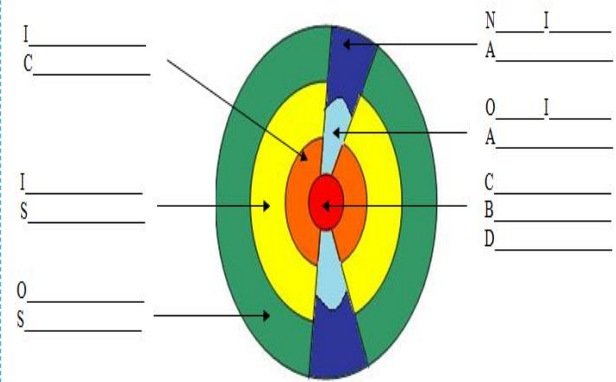
## BedZED Basics

Average water consumption at **87 litres** per person per day - 61% of the average for metered homes in Sutton.

BedZED resident's travel carbon footprint is estimated to be **half the UK average**

Between 2012 and 2015 BedZED's greenhouse gas emissions from heating and electricity use were **32% lower** than an equivalent conventional development.

A typical two-person household was found to **save £1,391 a year** in combined energy, water and transport bills.



# Comparison goods

Consumers purchase less often and so they usually evaluate prices, features and quality levels before making a purchase.

# Convenience Goods

A convenience good is a consumer item that is widely available and bought often with minimal effort



High Order



Low Order



# Modern Shopping Hierarchy

Regional shopping centre and out of town superstores



Broadway Development. Rejuvenating CBD Bradford

Figure 1: Hosting the Tour de France has been good for the local area



Figure 11: % of local businesses that saw a positive or negative impact in sales and attribute this to the Tour de France

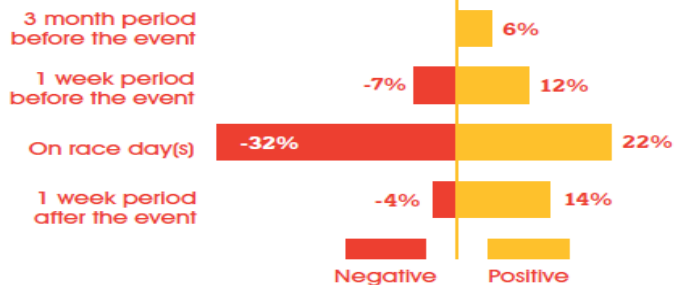


Figure 2: Estimated total spectators

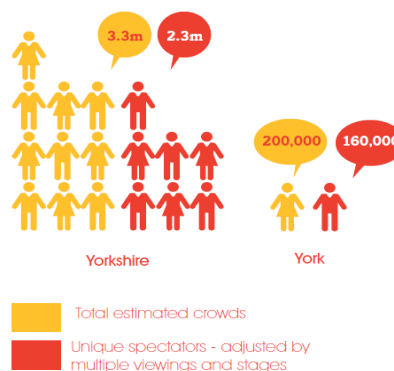
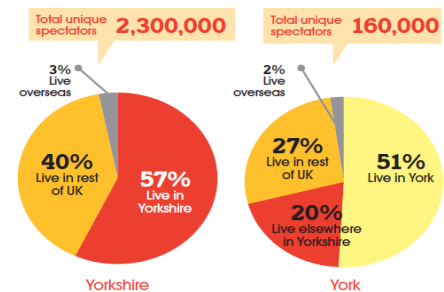


Figure 3: Unique spectators by area



elsewhere in the UK, including 2% from overseas. This is shown on Figure 3.