

Paper 2
Question 2

Remember:

C D I



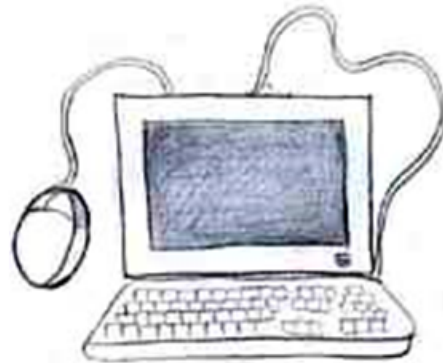
C – comparison

D - detail

I – inference

For Paper 2 Question 4, remember to use.....

- Point
- Evidence
- Explain
- Compare/contrast
- Evidence
- Explain



...when writing your answers.

For Question 3, remember:
WARM PIES and AFOREST

WORD CLASSES

ALLITERATION

RHETORICAL

QUESTIONS

METAPHOR

PERSONIFICATION

IMAGERY

EMOTIVE

LANGUAGE

SIMILE



A	alliteration / anecdote / address
F	facts
O	opinions
R	repetition/rhetorical questions
E	emotive language / exaggeration
S	stats/similes
T	Triples



Q5 –Argue, Inform, Explain – writing about your own point of view

5 minutes planning 40 minutes writing 2-3 sides
24 marks content & organisation 16 marks accuracy

Start with a powerful statement, fact, statistic or rhetorical question

You need to present your reader with a clear set of logical ideas about a topic. You need to show consideration of alternative views to your own.

TIPS:

You **MUST** use devices throughout your response:

- Rhetorical questions
- 3 part list
- Exaggeration (hyperbole)
- Comparisons through imagery (simile, metaphor)
- Emotive language
- Anecdotes (personal stories & details or a case study)

CONNECTIVES to develop ideas:

- | | |
|----------------------------|---------------|
| Firstly | Secondly |
| In addition / Additionally | Furthermore |
| Moreover | In contrast |
| On the other hand | Alternatively |
| Finally | In conclusion |

- Give articles a heading

Paper 2
Question 5

Remember to use
AFOREST:



A	alliteration / anecdote / address
F	facts
O	opinions
R	repetition/rhetorical questions
E	emotive language / exaggeration
S	stats/similes
T	Triples