

Year 9 – Machine embroidery/sewing techniques

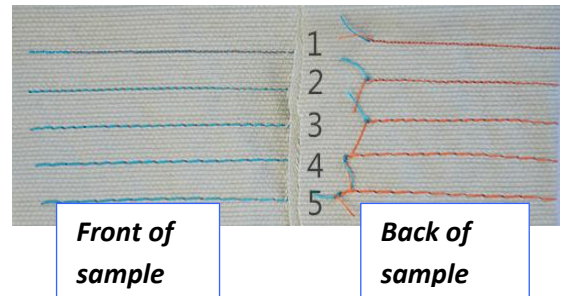
Straight stitch

These stitches will repeat a line of stitches, and they may vary in length and width. When using a straight stitch, you'll have a repeat of single lines to make a single pattern. Since patterns are meant to be fun and exciting, curves and shapes are able to be made, so everything isn't just straight.

When you want to use a straight stitch, remember that they're used most often for:

- Detail work
- Single color drawings
- Outlining

Experimenting with stitch length



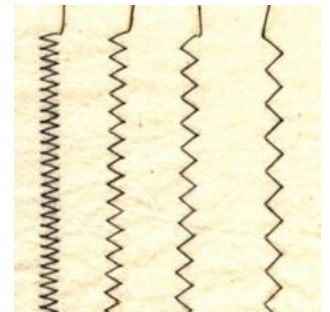
Satin stitch (grade 5)

It is a back-and-forth **stitch** used where a straight **stitch** will not be appropriate, such as in reinforcing buttonholes, in **stitching** stretchable fabrics, and in temporarily joining two work pieces edge-to-edge. It is usually used to apply applique decoration to the outline edge.



Zigzag stitch

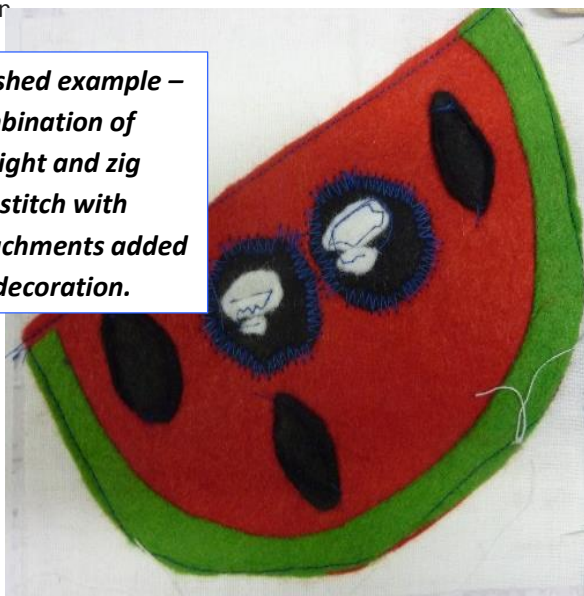
Similar to the zigzag stitch but is much closer together. Can be used to apply decoration such as applique or reverse applique and also lettering/shape outlines.



Applique

Design a shape onto the paper side of the bonda web and then cut out using paper scissors. Iron onto chosen material (felt) and then cut out shape using fabric scissors. Peel paper layer off to reveal the glue layer. Then iron onto chosen fabric (cotton). Then choose a suitable stitch type to attach it to the fabric. The use of bonda web can stop the material from stretching when it is being sewn on.

Finished example – combination of straight and zig zag stitch with attachments added for decoration.



Reverse applique

This is where holes/shapes are cut out of the chosen fabric (denim) using embroidery scissors. The edge is then sewn using either a straight or zig zag stitch. Behind the fabric is the design itself (use of fabric pens). The hole cut out is used to show a section or all of the design underneath.



Grade 6/7 - to show the creative use of the basic satin stitch for specific shapes and detailing whilst applying the applique and reverse applique. Also demonstrating experimentation especially with the satin stitch whilst using the embroidery sewing machines. **Describe, compare, analyse and evaluate each technique.**